

23 January 2012  
 The Manager  
 ASX Announcements

**Assays confirm and increase grades of new high grade base metal discovery for Lincoln at Minbrie on SA’s Eyre Peninsula**

First laboratory assays have confirmed the recently announced (9 January, 2012) Lincoln Minerals Limited (ASX: LML) discovery of a new high grade base metals deposit at Minbrie on exploration License EL 3610 near Cowell on the east coast of South Australia’s Eyre Peninsula.

The assays have also increased the grade of the new copper-lead-zinc-silver discovery.

**Key points:**

- High grade copper-lead-zinc-silver mineralisation extended to 29.5m interval
- Averaging 0.76% copper, 7.37% lead, 1.88% zinc, 9.0 g/t silver and trace gold
- Copper equivalent grade of 3.05% CuEq

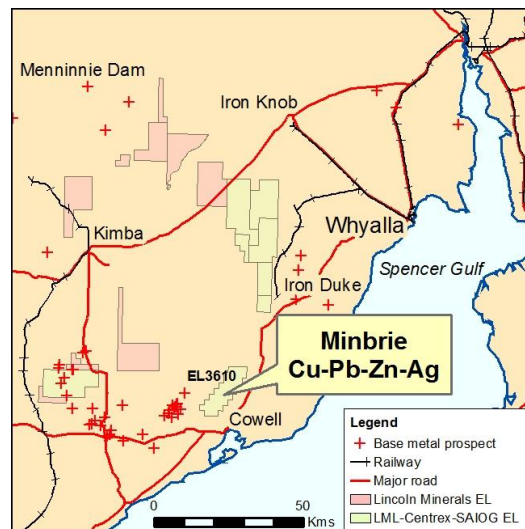


Figure 1: Location of the Minbrie Project

The new laboratory assay results, announced by Lincoln today, are superior to the preliminary field portable XRF results announced earlier this month.

The Company acknowledges that the discovery on EL 3610 is in its early stages of exploration.

The assay results come from diamond core drillhole, BUDD192 (676974mE, 6282951mN, MGA94 Zone 53, angled -60° toward 135°) within the interval 131.1m to 160.6m. The new laboratory assay results over that 29.5m interval (27m in original release), with the previous XRF results in brackets, have increased the average grade to 0.76% Cu, (0.71%); 7.37% Pb (2.8%); 1.88% Zn (1.9%); 9.0g/t Ag (8.5 g/t) and trace gold to give a 3.05% Cu equivalent (1.9%).

From (m)	To (m)	Interval (m)	Au (g/t)	Ag (g/t)	Cu (%)	Pb (%)	Zn (%)	Copper Equivalent (%)
131.1	160.6	29.5	0.01	9.0	0.76	7.37	1.88	3.05
<i>including</i>								
139	151	12	-	13.2	1.35	12.39	2.06	4.95
145	146	1	-	36	4.8	31	3.14	13.32
156	159	3	0.09	17.0	1.74	19.37	2.03	7.08

Gold assays range up to 0.1 g/t (156-157m and 158-159m).

The new discovery on EL 3610 is in an area subject to a coordination agreement with Centrex Metals Limited and that company's wholly-owned subsidiary, South Australian Iron Ore Group Limited (SAIOG). Lincoln Minerals has 100% of the rights for all minerals and metals other than iron on EL 3610.

**Lincoln Minerals' Managing Director, Dr John Parker:**

*"As previously announced, the discovery of copper-lead-zinc-silver at Minbrie represents an exciting new base metal discovery on the Gawler Craton and Eyre Peninsula.*

*"The assays results however, inject even more encouragement for the initial discovery drill hole at Minbrie. With base metal grades ranging up to 4.8% Cu (145-146m), 47.1% Pb (141-142m), 5.5% Zn (133-134m) along with up to 36 g/t Ag (145-146m) and trace gold (up to 0.1 g/t Au, 158-159m), this discovery is an important exploration target for the Company.*

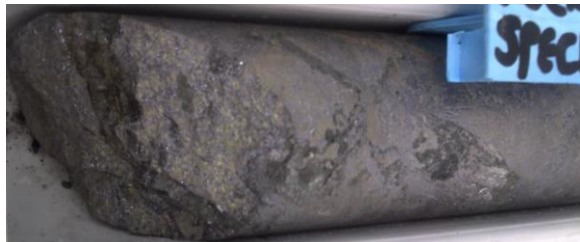
*Furthermore, the high lead and close proximity of the Port Pirie lead smelter make this an attractive proposition."*

**Further inquiries:**

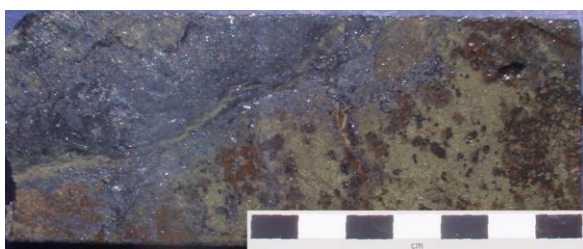
**Dr John Parker**

**Managing Director, Lincoln Minerals Limited**

**Tel: (08) 8274 0243**



Visible galena (silvery-grey) and chalcopyrite (yellowish) in drillcore from Minbrie BUDD192, 157.2m



Galena (silvery-grey), chalcopyrite (yellowish) and sphalerite (reddish-brown) in drillcore from Minbrie BUDD192, 141m (bar scale in centimetres)

*Information in this report that relates to exploration activity and results was compiled by and under the direction of Dr A J Parker who is a Member of the Australasian Institute of Geoscientists. Dr Parker is Managing Director of Lincoln Minerals Limited and has sufficient experience relevant to the styles of mineralisation and to the activities which are being reported to qualify as a Competent Person as defined by the JORC code, 2004. Dr Parker consents to the release of the information compiled in this report in the form and context in which it appears.*

*Copper Equivalent is based on LME copper, lead and zinc prices at 20 January 2012. The copper equivalent calculation represents the total metal value for each metal, multiplied by the price-based conversion factor, summed and expressed in equivalent copper percentage. These results are exploration results only and no allowance is made for recovery losses that may occur should mining eventually result nor metallurgical flowsheet considerations. The copper equivalent calculation is intended as an indicative value only.*